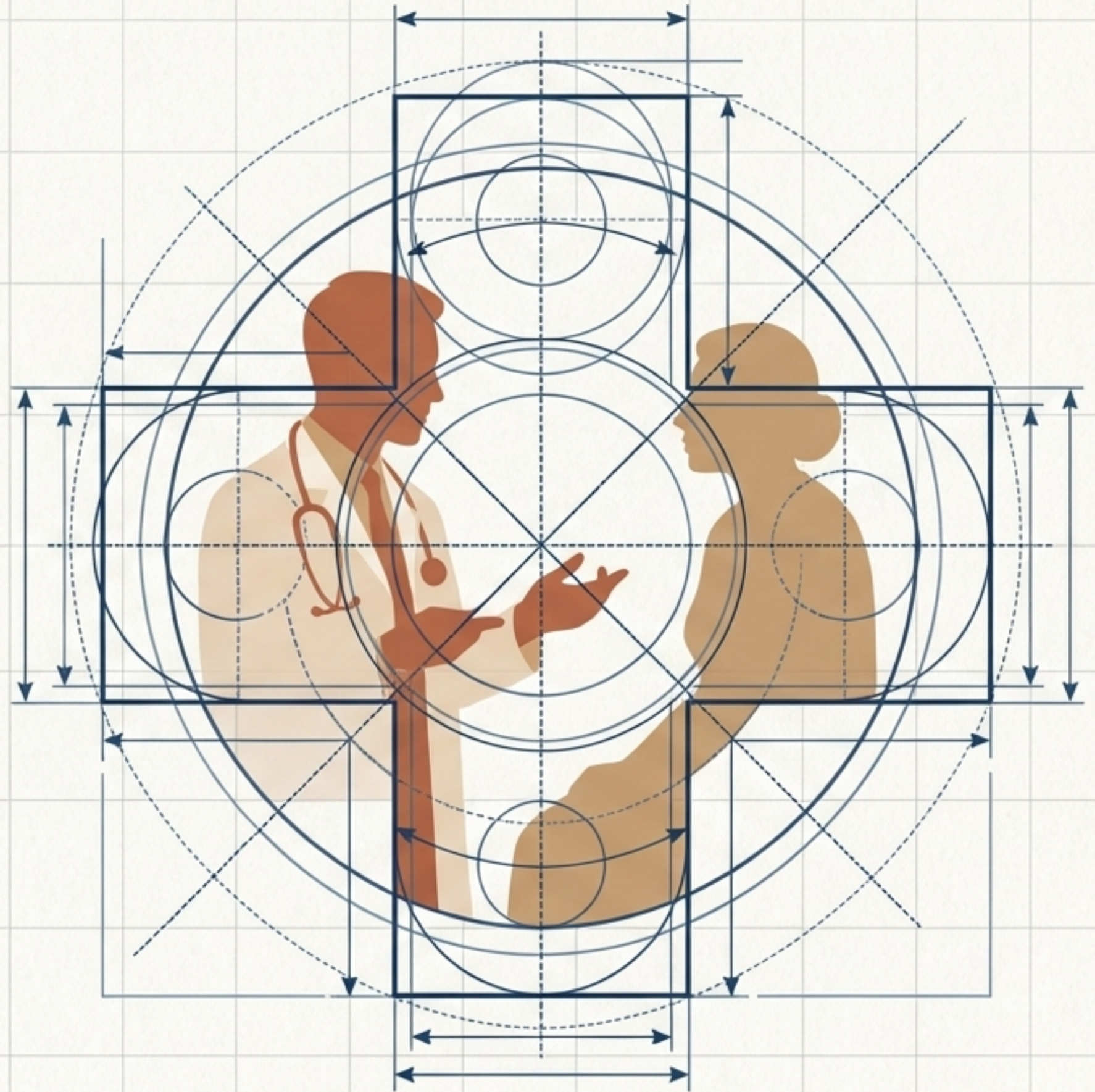
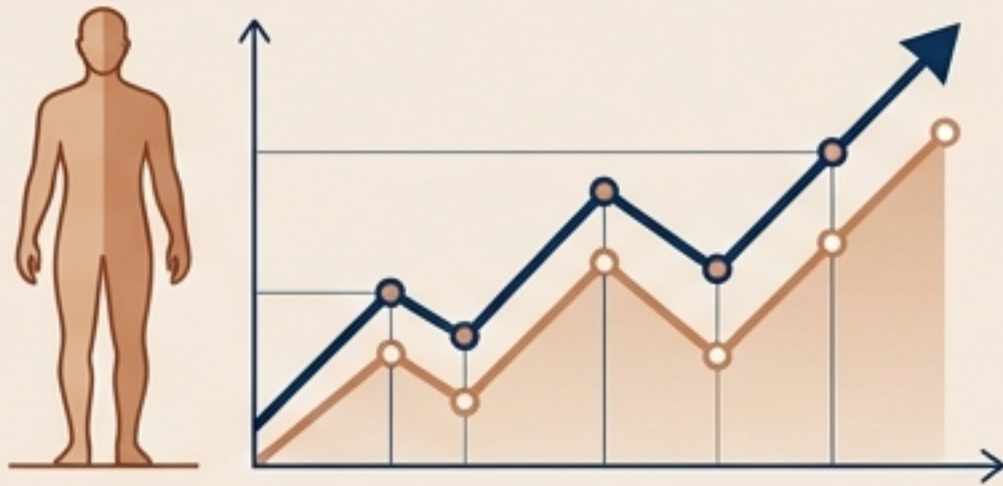


# AI for Care: Ireland's Healthcare Transformation

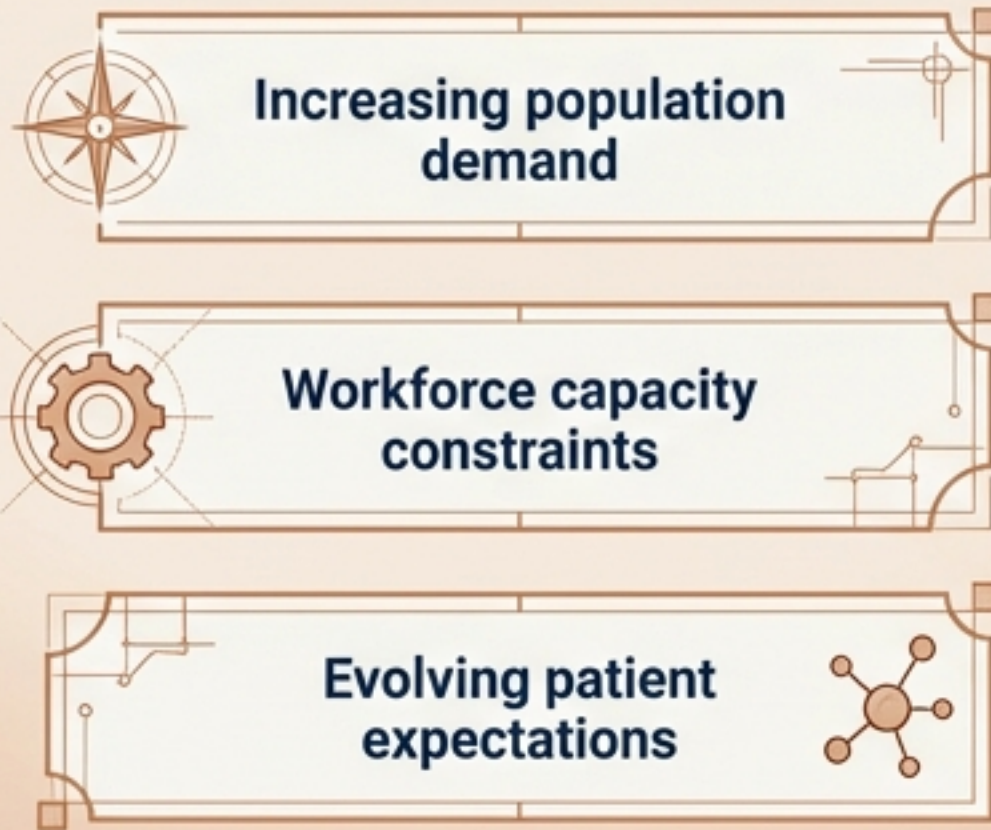
The Artificial Intelligence  
Strategy for Health & Social  
Care (2026-2030)

**DigitalGov.network**





## The Pressures



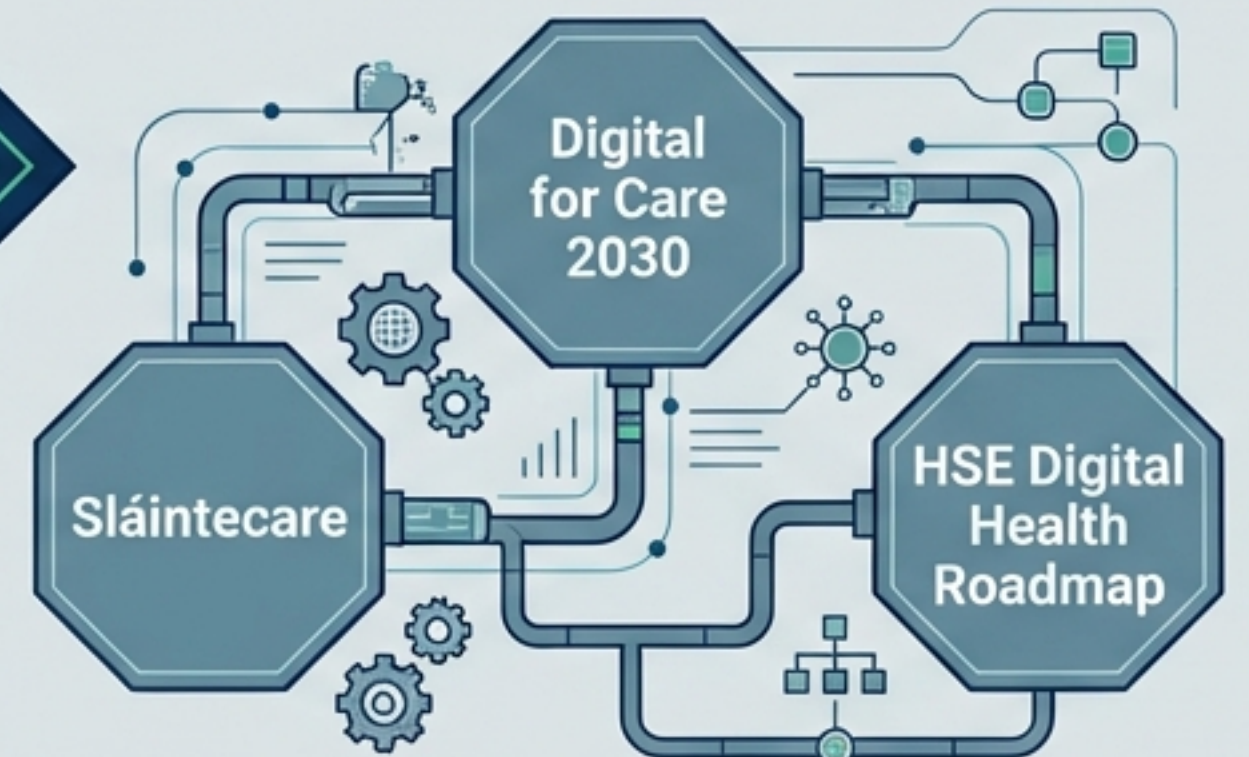
## The AI Enabler

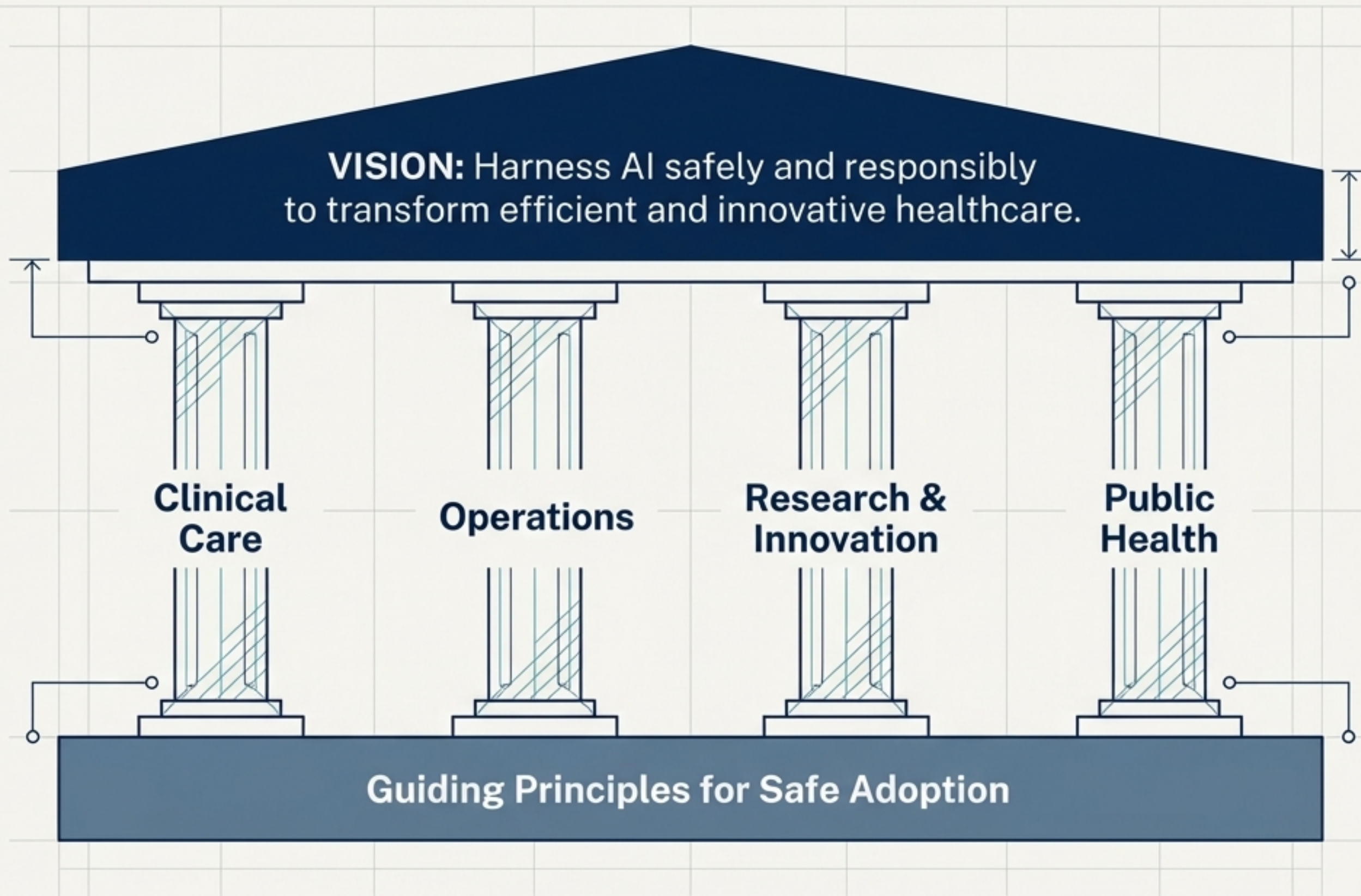


AI acts as a complementary enabler to bridge this gap, ensuring patients are empowered as the secure guardians of their own health data.



## The Solution Ecosystem



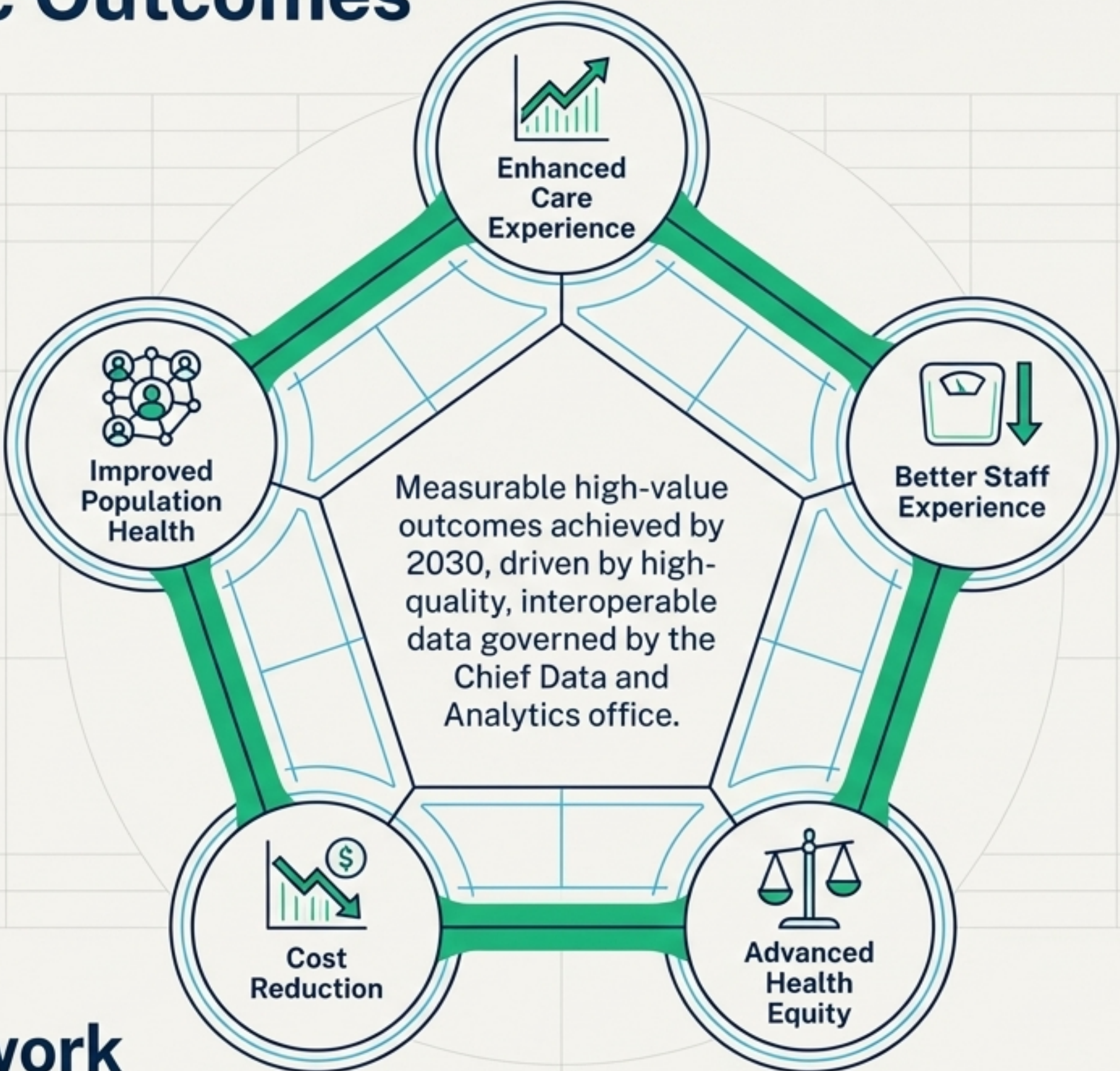


**DigitalGov.network**

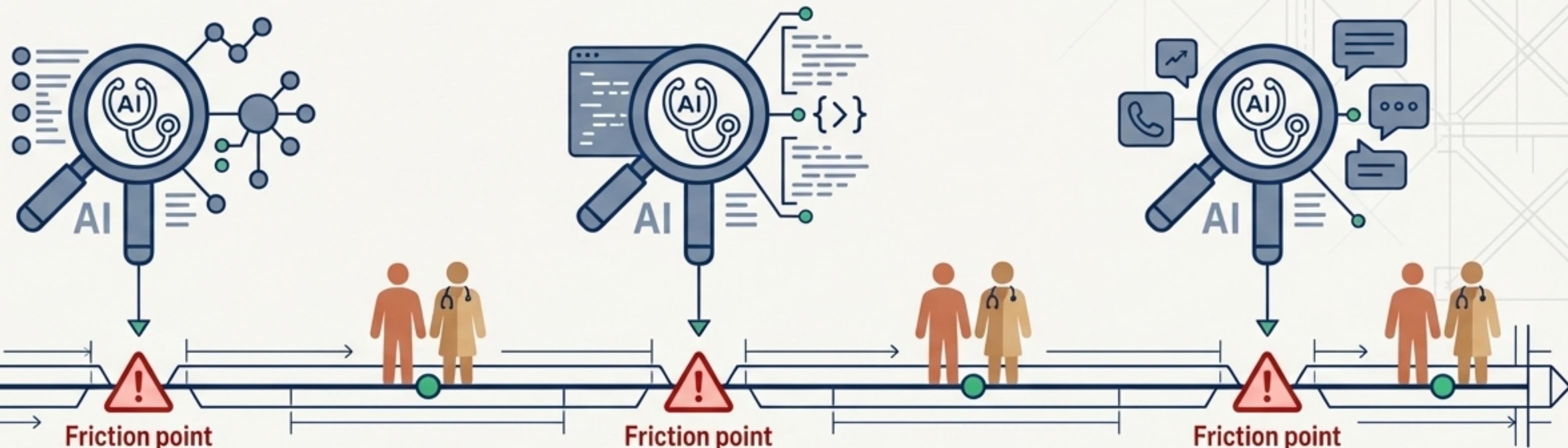
# The Protective Guardrails



# The Strategic Outcomes



# Pillar 1: AI for Clinical Care



**Clinical Decision Support:**  
Integrating with the National Integrated Medical Imaging System (NIMIS) to improve diagnostic accuracy.

**Clinical Documentation:**  
Generative AI and NLP for ambient scribing, extracting unstructured text, and summarizing discharge notes.

**Patient Navigation:**  
Virtual assistants providing tailored discharge advice in native languages.

**DigitalGov.network**



**Safety Guardrail: AI-as-a-Medical-Device.**  
Mandatory risk management and AI registry requirements for clinical AI under the EU AI Act.

# Pillar 2: AI for Operations




**Patient surge**

**Demand & Capacity Management:**  
Proactive resource allocation to predict and meet patient surges.



**EHR Implementation Acceleration:** Automating legacy data migration and structuring unstructured clinical notes.

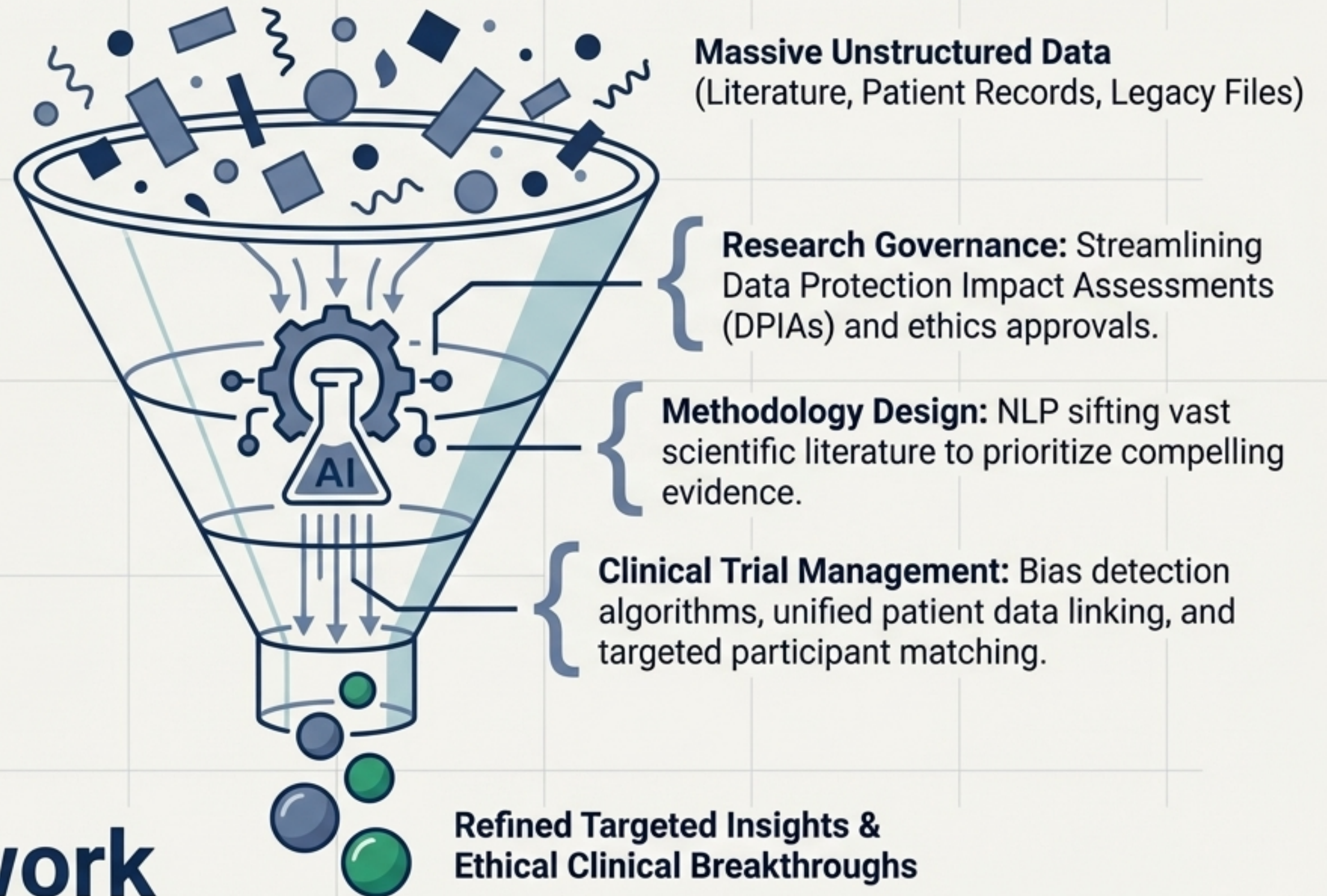


**Hospital Simulation:**  
AI-generated avatars for operational layout planning and surgical simulation.



**Supply Chain & Patient Flow:**  
Minimizing supply waste and coordinating responsive care pathways to shorten wait times.

# Pillar 3: AI for Research & Innovation



**DigitalGov.network**

# Pillar 4: AI for Public Health

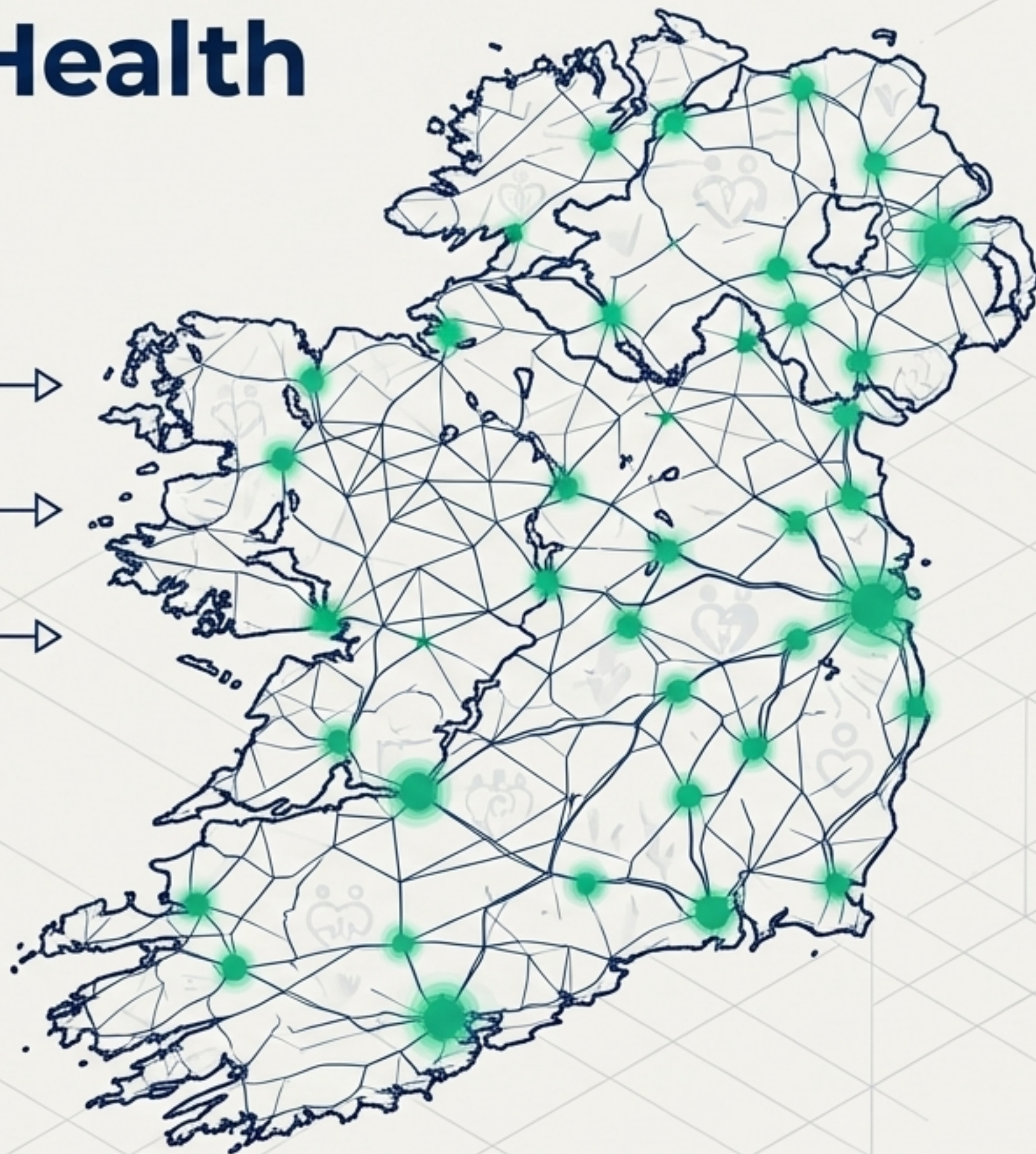
**Population Risk Prediction:** Identifying systemic health risks before they become acute emergencies.

**Evidence-Based Policy:** Synthesizing macro data trends to inform proactive public health strategies.

**Targeted Screening:** Moving from reactive acute care to highly targeted, community-based health promotion.

**Goal: Transitioning the system from reactive disease management to proactive health promotion**

**DigitalGov.network**



# Synthesis: The AI Opportunity Matrix

	Now (Year 1)	Next (Years 2-3)	Future (Years 4-5)
Clinical Care	<ul style="list-style-type: none"><li>Imaging</li><li>Clinical Docs</li></ul>	<ul style="list-style-type: none"><li>Patient Navigation</li></ul>	<ul style="list-style-type: none"><li>Robotics for Surgery</li></ul>
Operations	<ul style="list-style-type: none"><li>Demand Management</li><li>Contact Centres</li></ul>	<ul style="list-style-type: none"><li>EHR Acceleration</li><li>Supply Chain</li></ul>	<ul style="list-style-type: none"><li>Advanced Automation</li></ul>
Research & Innovation	<ul style="list-style-type: none"><li>Research Gov</li><li>Data Analysis</li></ul>	<ul style="list-style-type: none"><li>Trial Management</li><li>Methodology</li></ul>	<ul style="list-style-type: none"><li>Predictive Discovery</li></ul>
Public Health	<ul style="list-style-type: none"><li>Risk Prediction</li></ul>	<ul style="list-style-type: none"><li>Policy Creation</li><li>Screening</li></ul>	<ul style="list-style-type: none"><li>Dynamic Prompts</li></ul>

# Deep Dive: Horizon 1 - The Immediate Foundation

(Now - Year 1)

**Why These First?** These initiatives represent the highest level of proven AI success and feasibility. They deliver immediate value realization while setting a robust technical groundwork for future complexity.

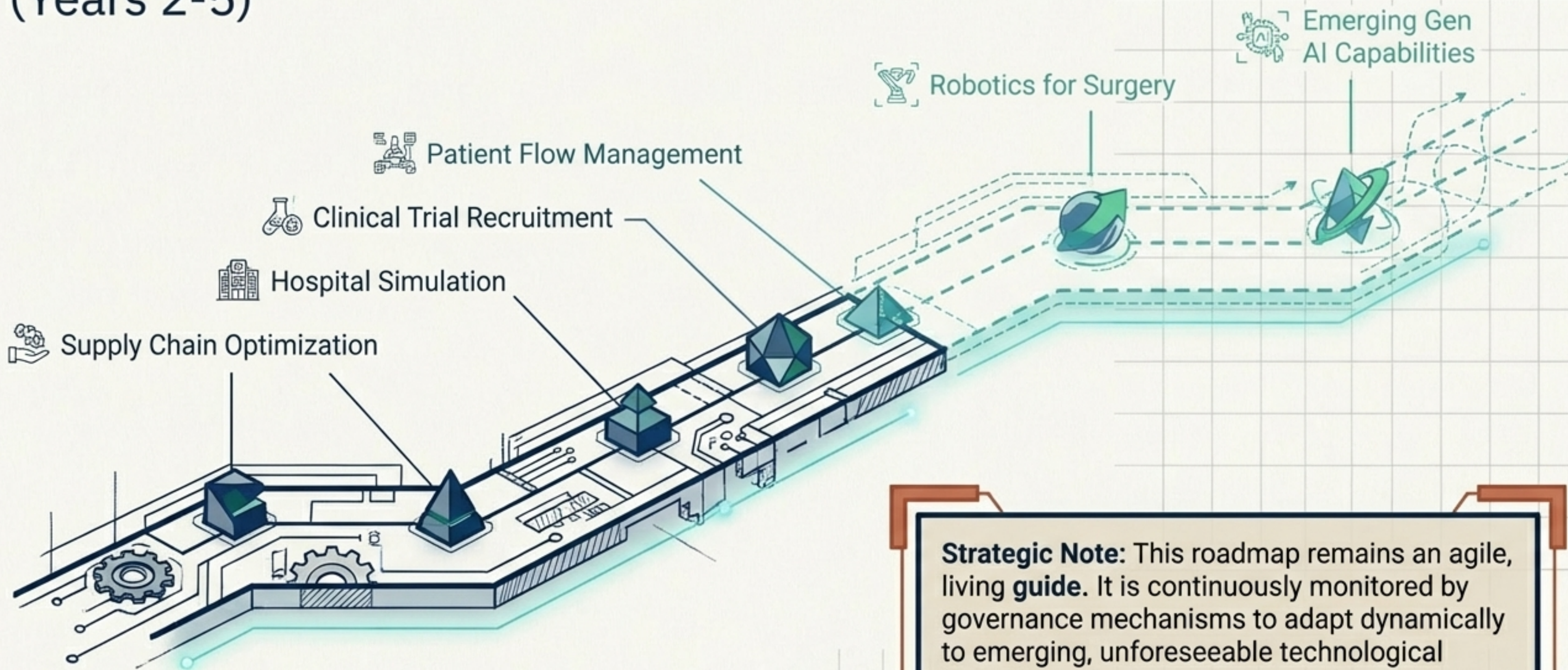
- **Clinical Documentation Development:** Deploying ambient scribing to radically reduce administrative burdens.

- **Contact Centre & Support Automation:** Streamlining high-volume operational inquiries.

- **Data Analysis & Interpretation:** Accelerating insights from unstructured legacy data.

- **Imaging & Clinical Decision Support:** High-accuracy AI diagnostics alongside clinicians.

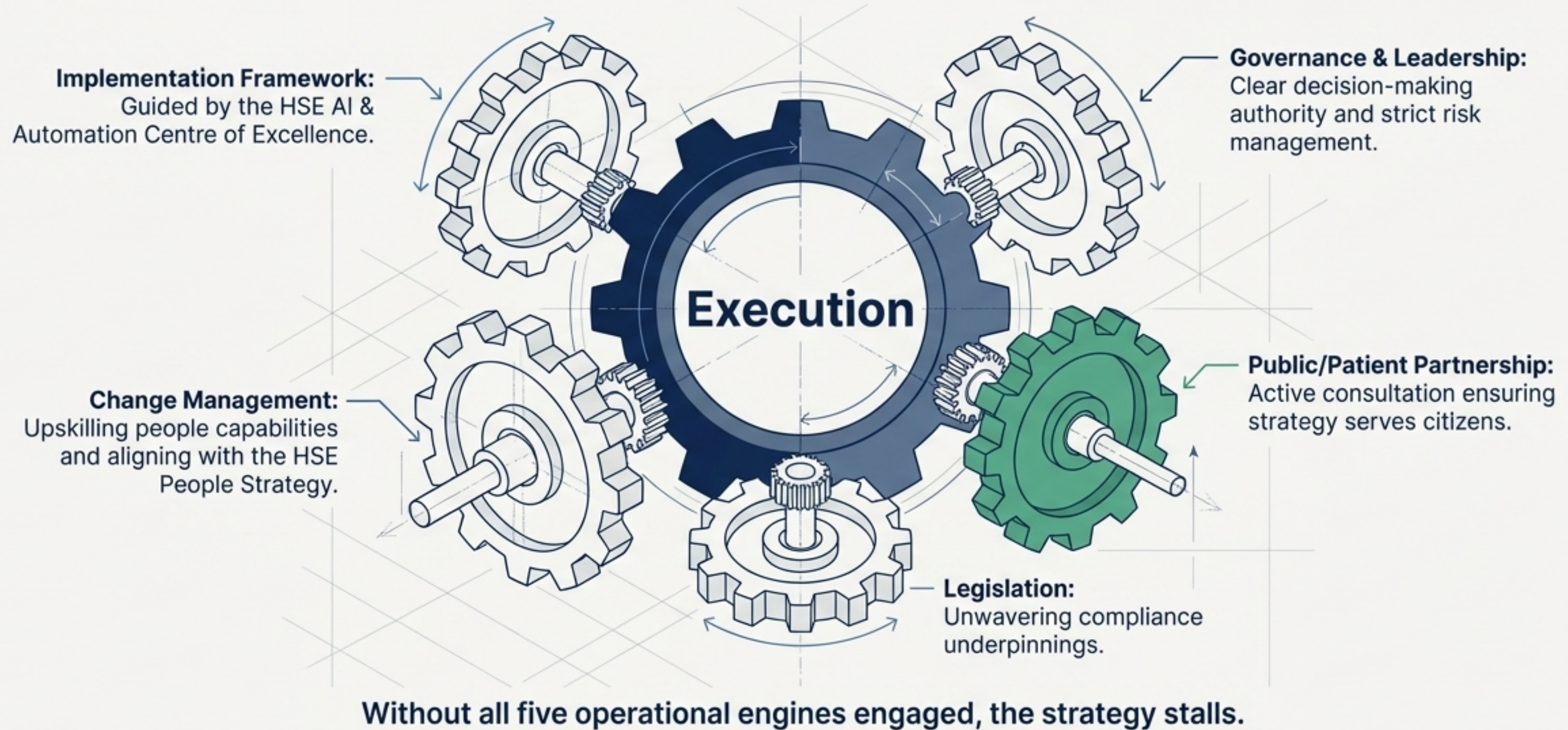
# Deep Dive: Horizons 2 & 3 - Next & Future (Years 2-5)



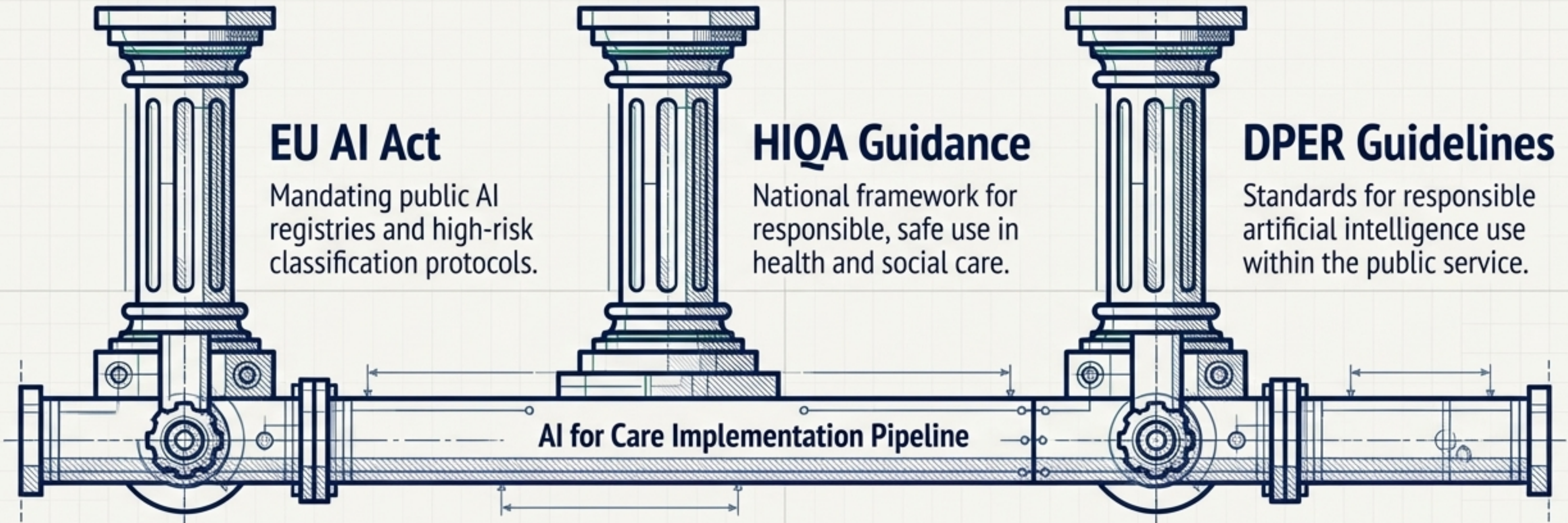
**Strategic Note:** This roadmap remains an agile, living guide. It is continuously monitored by governance mechanisms to adapt dynamically to emerging, unforeseeable technological breakthroughs.

**DigitalGov.network**

# Activation: The Engines of Success



# Legislative Alignment & Trust



**Trust is built on strict compliance. We do not self-regulate; we interlock with national and European mandates to safeguard patients.**

# The Path Forward

1. **Activate HSE AI Implementation Framework:** Detailed execution planning and robust approval processes.
2. **Secure SLT Approval & Funding:** Aligning initiatives with the National Development Plan.
3. **Establish AI & Automation CoE:** Delivering implementation support and registering projects on the National AI Registry.
4. **Form Strategic Partnerships:** Sourcing best-of-breed vendor solutions for configuration.

*Continuously evaluating, continuously improving.  
AI as a partner in care.*

**DigitalGov.network**

